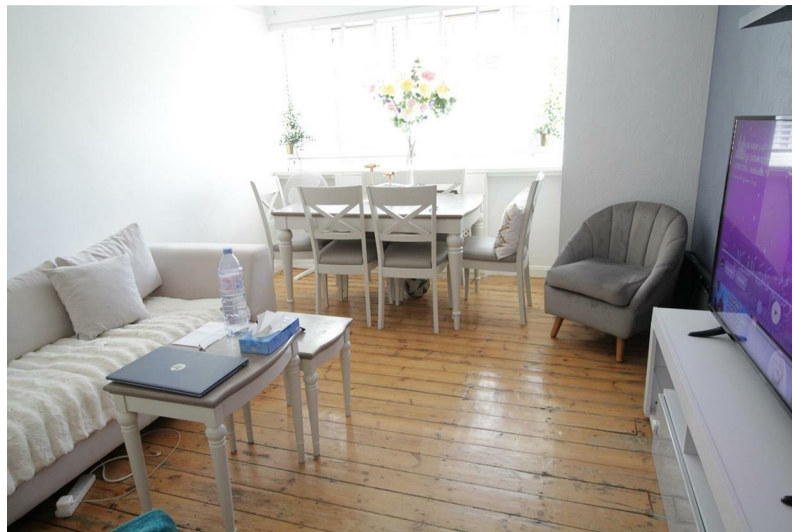


Effra Road | London, SW2



£270,000
Leasehold

- Immediate exchange of contracts
- Being sold via Secure Sale
- Great Location
- Close to Brockwell Park

Effra Road | London, SW2



Being sold via Secure Sale online bidding. Terms & Conditions apply. Starting Bid £270,000

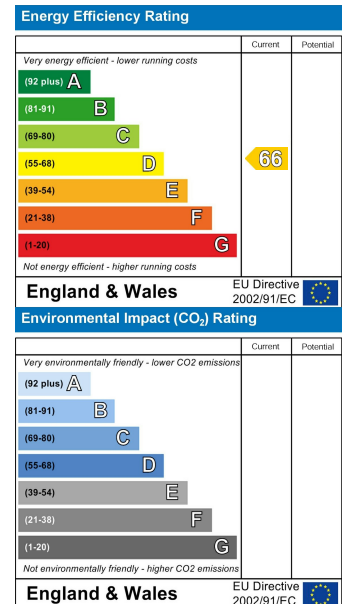
This property will be legally prepared enabling any interested buyer to secure the property immediately once their bid/offer has been accepted. Ultimately a transparent process which provides speed, security and certainty for all parties.

A well presented two-bedroom flat offering bright and generously sized accommodation throughout.

Situated within a well-maintained residential block, this property features two double bedrooms, a spacious living room, a fitted kitchen and a family bathroom.

Conveniently located close to local amenities, transport links and green spaces.

Pattinson Auction are working in Partnership with the marketing agent on this online auction sale and are referred to below as 'The Auctioneer'.



These particulars are designed to provide a guideline only and cannot be relied upon as a statement of fact. The description represents the opinion of the author and is not intended to provide false or misleading information. Any prospective purchaser should make further checks on its accuracy. All measurements are approximate and floorplans are for representation only.



Eden Harper
3 Arlington Parade, Brixton Hill, Brixton, SW2 1RH
0207 274 3111
brixsales@edenharper.com
www.edenharper.com